

Moving Water



Water Transportation

The process of water transportation is the way water moves through a plant.

The roots absorb water from the soil.

The stem transports water to the leaves.

Water evaporates from the leaves.

This evaporation causes more water to be sucked up the stem.

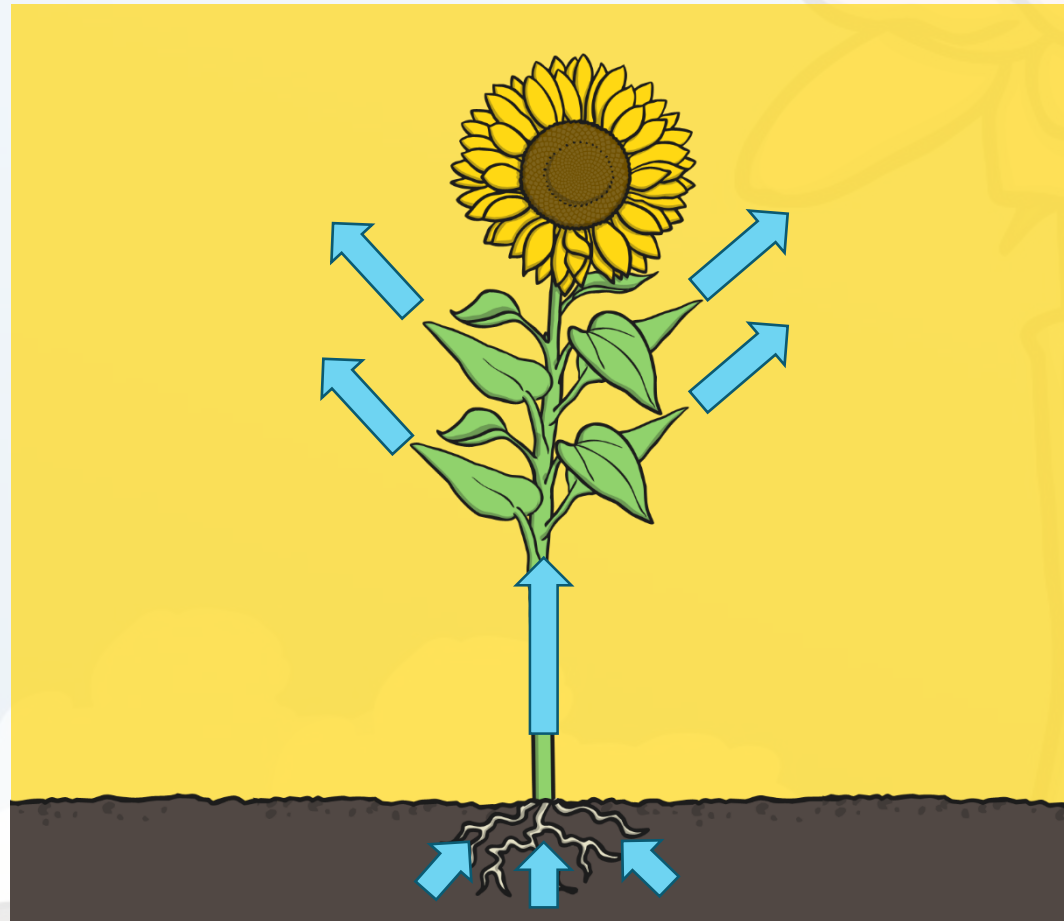
The water is sucked up the stem like water being sucked up through a straw.



Water Transportation



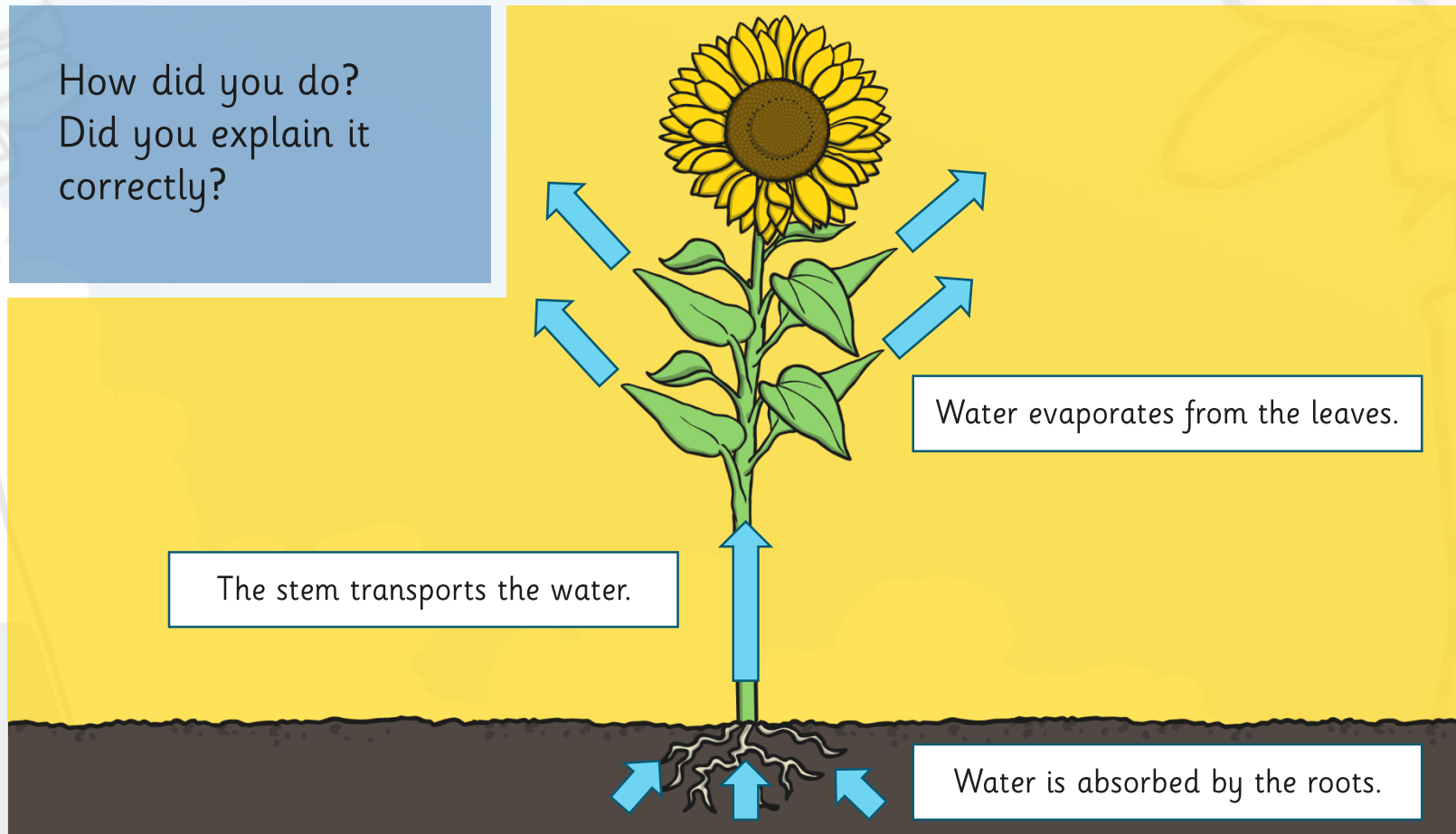
Can you explain the process of water transportation to your partner?
Use this diagram to help!



Water Transportation

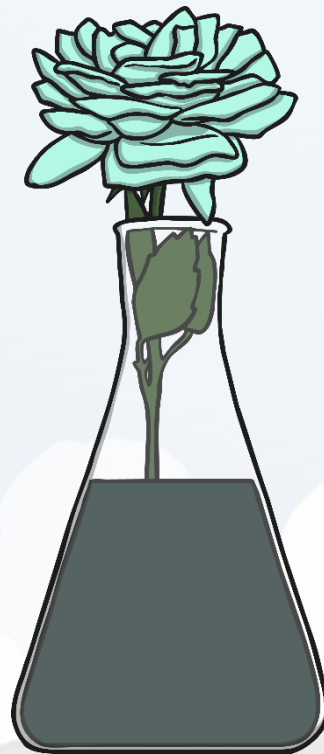


How did you do?
Did you explain it
correctly?



Transportation Investigation

Look at the flower. It started off as bright white. What has happened to it?



Transportation Investigation



Food colouring was added to the water.

The stem sucked up the coloured water, then transported the water to the flower.

The colour showed up in the petals.

Can anyone think of how we could use this idea to compare the speed of water transportation in different temperatures?

